

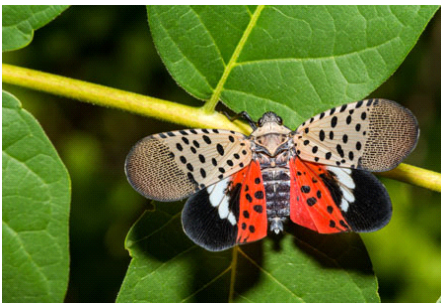
GROWERTALKS

GT in Brief

4/1/2023

NJ Under SLF Quarantine

JC Chong



The New Jersey Department of Agriculture (NJDA) announced on February 1 that eight more counties were added to the state's quarantine zone for spotted lanternfly (SLF). With those additions, the entire state of New Jersey is now under SLF quarantine.

Being the first state where the entire state is quarantined isn't exactly an honor. In addition to New Jersey, SLF quarantine has been imposed in parts of Connecticut, Delaware, Maryland, Ohio, Pennsylvania and Virginia. Isolated detections and infestations are reported in seven other states, but

no quarantine has been imposed in these states.

Under the quarantine regulations, New Jerseyans are now required to check a long list of items, which are likely left outdoors and may have SLF egg masses, before moving these items out of the quarantine area. The checklist contains pictures of SLF life stages, information on how to process the SLF if found and a self-certification that should be signed, dated and carried in the vehicle. NJDA also asks folks to check their vehicles for hitch-hiking SLF before leaving the state.

Businesses that routinely travel in and out of the state are required to receive training, obtain a permit and comply with quarantine regulations.

You can find more information on SLF quarantine regulations in New Jersey at nj.gov/agriculture. **GT**